

CONNECTING YOUR SCANNER TO THE DENTAL LAB



THE DENTAL LAB accepts scans directly from six different intraoral scanning systems. Read below to learn more about sending your file digitally.



CEREC

- Log in to Sirona Connect
- Select "My Cerec Connect" then "Edit Account"
- Under "My Account" select "My Favorite Laboratories"
- Search "digital@cornerstonedl.com" in the field for "Company name" and check the box
- Click "Add" to register
- Select your restoration preferences and send the scans by selecting "Submit Cart"



iTERO ELEMENT

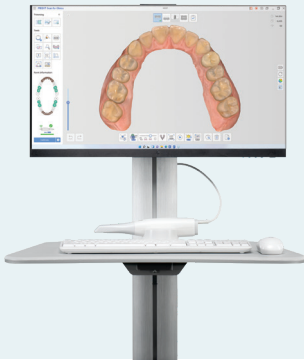
- Contact Align Technology directly to add "The Dental Lab" to your list of "Favorite Labs"
- Provide iTero support with The Dental Lab lab ID 21051
- Under settings, select "Sync Configuration"
- Transmit case scans and data by selecting "Send" on the screen



TRIOS®

- Log in to your 3Shape account
- Under "More" select "Settings"
- In the menu, click "Connections" then "Labs" and "Add"
- Search "digital@cornerstonedl.com" and click "Connect" to send a request to connect
- After scans are completed and received, lab technicians will design the restoration, and a 3D model will be sent to the 3Shape Communicate site for you to review and approve

CONNECTING YOUR SCANNER TO THE DENTAL LAB



MEDIT

- Log in to your Medit account at meditlink.com
- Under "Partner" search for The Dental Lab Express by entering digital@cornerstonedl.com and request partnership
- Once partnership is approved, you can select The Dental Lab / Cornerstone Dental Lab when completing the digital Rx



HERON IOS

- Log in to your HeronClinic™ account
- Add digital@cornerstonedl.com as a lab of choice in interface by clicking "Connections" and "Add Connection"
- Select The Dental Lab / Cornerstone Dental Lab when completing the digital Rx
- The case will be sent to The Dental Lab through the Heron portal



CS3600

- Login to CS Connect as a Dentist
 - In the toolbar, click
 - In the Partners window, click "Invite a partner."
- In the Email field, enter digital@cornerstonedl.com
- In the Message box, either leave the default text or write your own message.
- Click "Send."
- The invitation message is sent to the Laboratory and a Partner entry is created in the list of Partners.

When the Laboratory logs in to CS Connect, the Partners button displays a notifications as follows:

This means that when the Laboratory clicks the Partners button, an invitation is displayed that can be accepted or declined.



Ori Scanner

- When creating a case select "The Dental Lab" from your dropdown menu.
- If "The Dental Lab" is not an option you can request it be added to your dropdown at <https://www.oriscanning.com/lab-request>.